

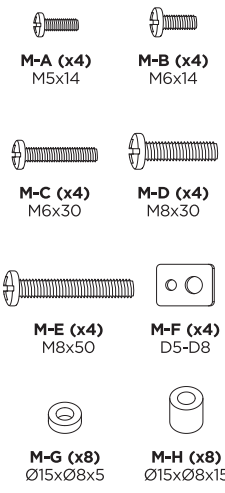
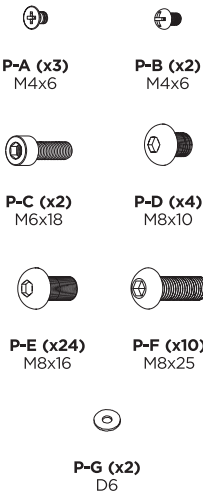
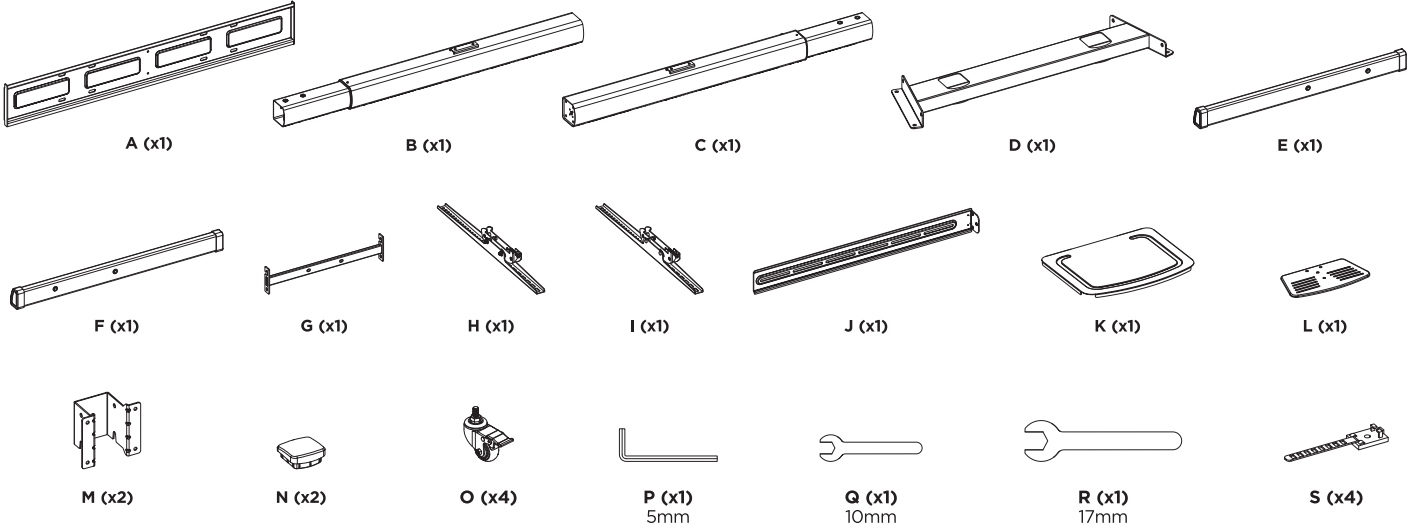
VESA Compatible
200x200 400x200
300x300 400x300
400x400 600x400
800x400 600x600
800x600 1000x600

100"
MAX

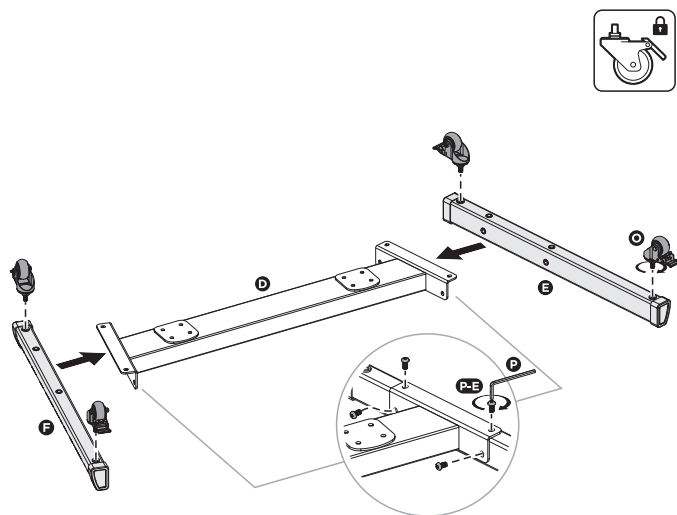
TV
RATED
120kg/264lbs

SHELF
RATED
5kg/11lbs

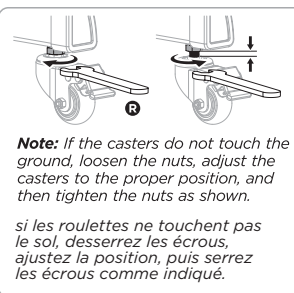
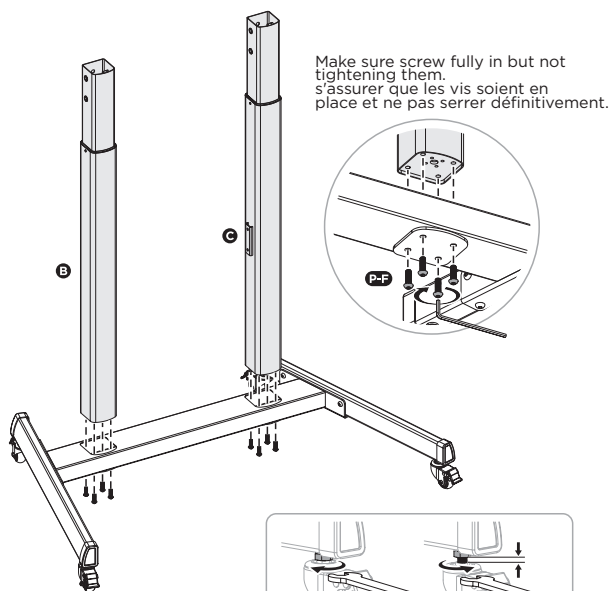
CAMERA
RATED
5kg/11lbs



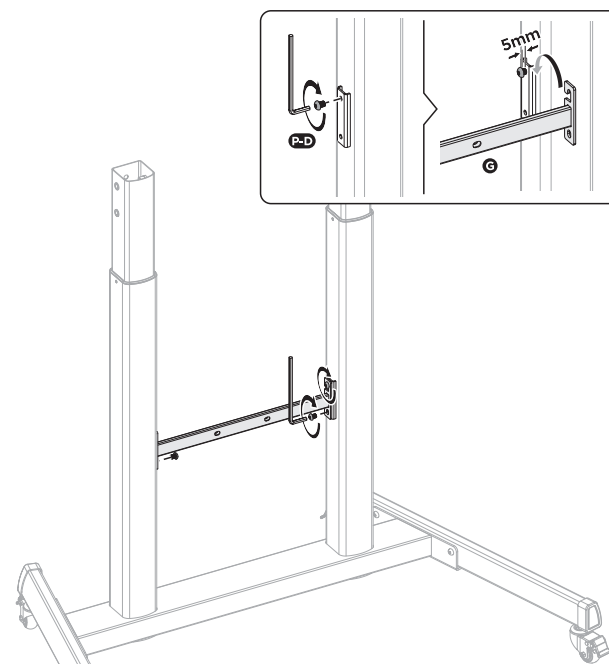
1



2



3



4

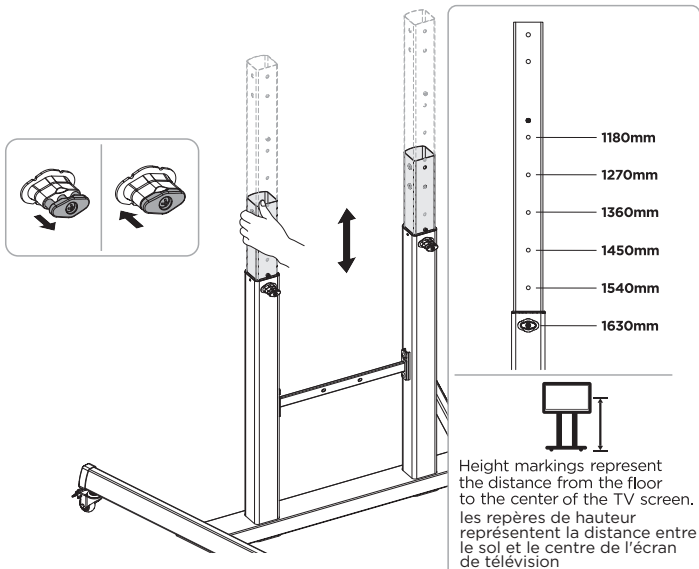


CAUTION 1: Further height adjustment is very complicated, highly suggest to adjust the height in this step only!

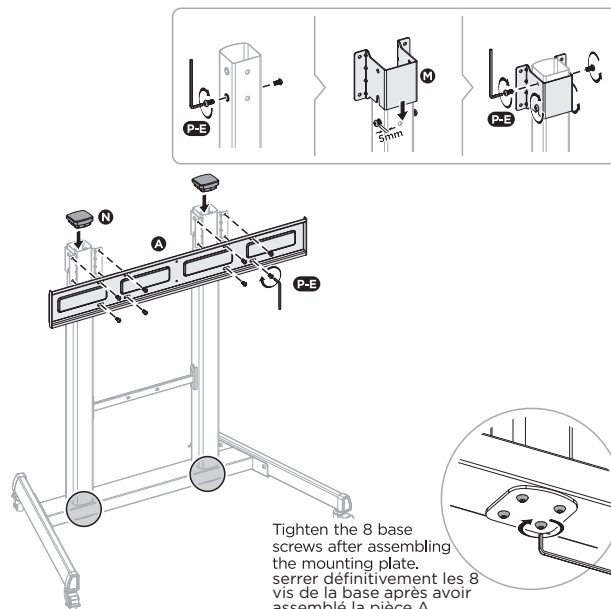
CAUTION 2: Always hold the tube while adjusting.

ATTENTION 1: Le réglage ultérieur de la hauteur est très compliqué, il est fortement conseillé de ne régler la hauteur qu'à cette étape.

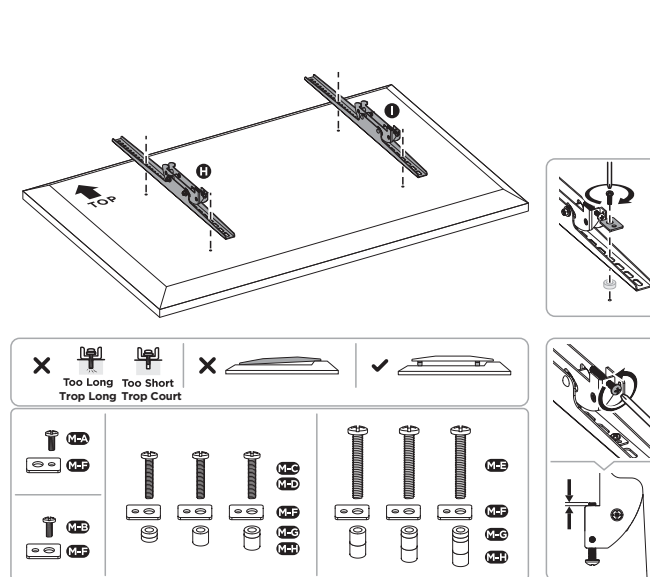
ATTENTION 2: Toujours tenir le tube pendant le réglage



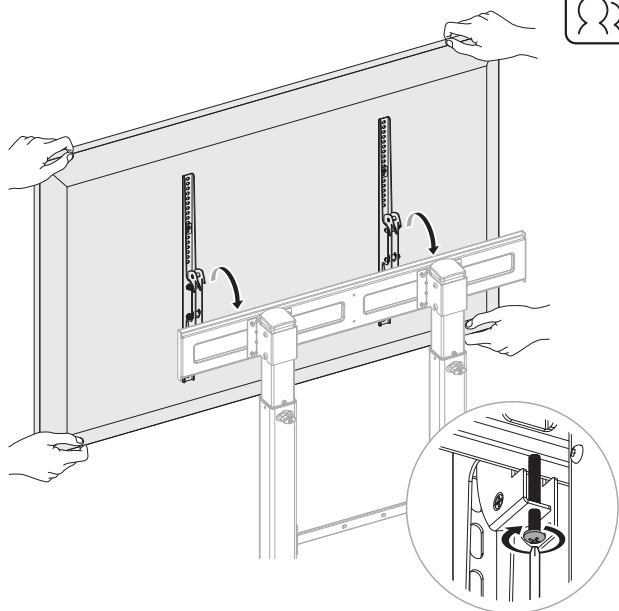
5



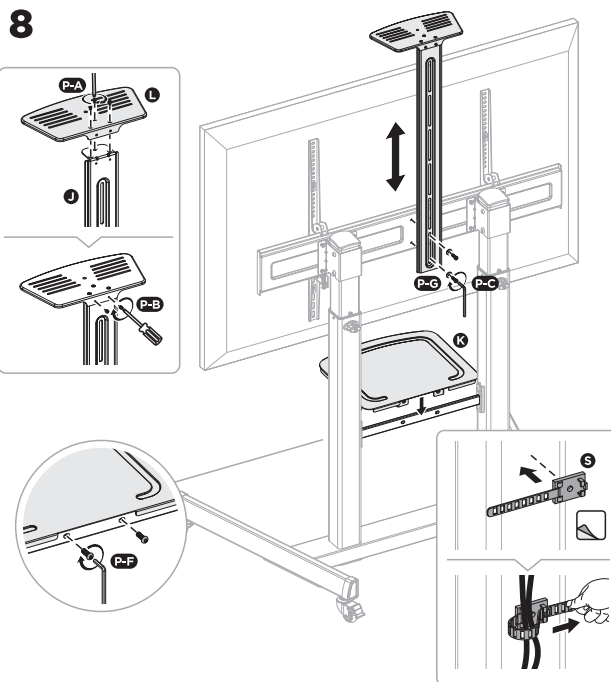
6



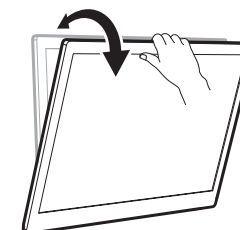
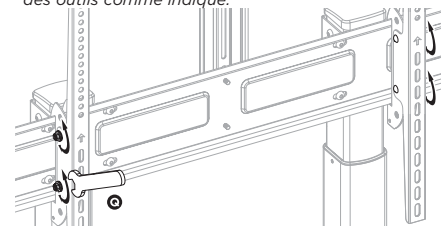
7



8



Note: If the display does not stop at your desired position, adjust the two side screws alternately using the tools as shown.
si l'écran ne s'arrête pas à la position souhaitée, régler les deux vis latérales alternativement à l'aide des outils comme indiqué.



<http://www.norstone-design.com>

